

## Quoobox™ Systems

a complete integrated core set of systems that allow building envelope, interior and exterior components to be seamlessly combined to create a modern structure.



# Cornice Process:

## Design to Install

### Cornice

*/ˈkɔrnɪs/*

noun

1. an ornamental molding around the wall of a room just below the ceiling.

# QUOOBOX™ SYSTEMS PRESENTS

THE PROCESS OF A CORNICE FROM DESIGN TO INSTALL

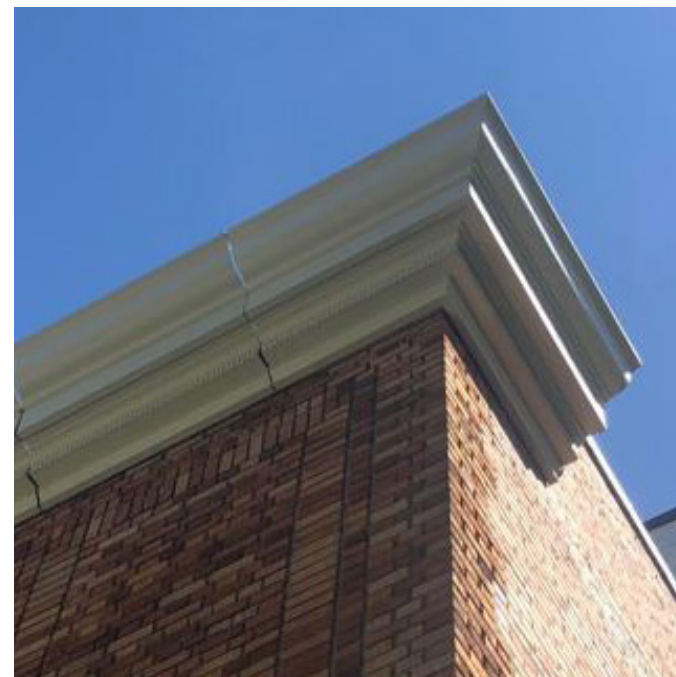
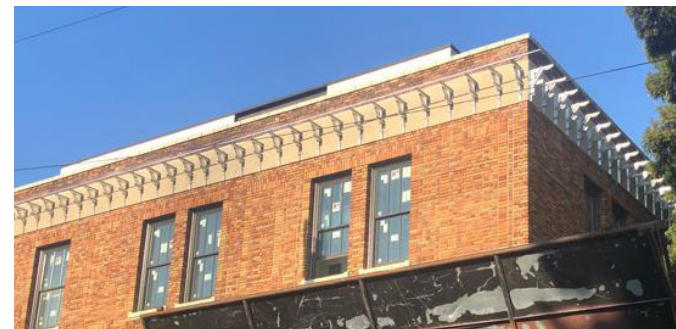
## OVERVIEW

Please use this space to give an overview of the cornice process from design to install. There was little text for me to pull from to fill out this section for you to give you a head start. Maybe list the process steps:

1. Design/ Engineering  
Details or brief of the design/engineering process

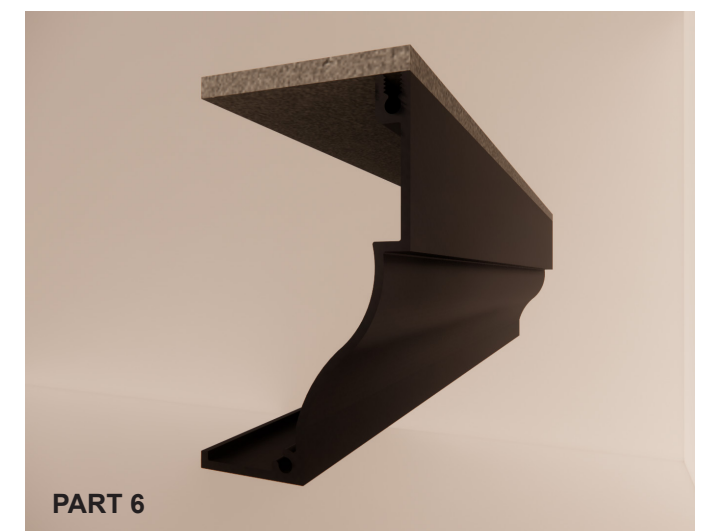
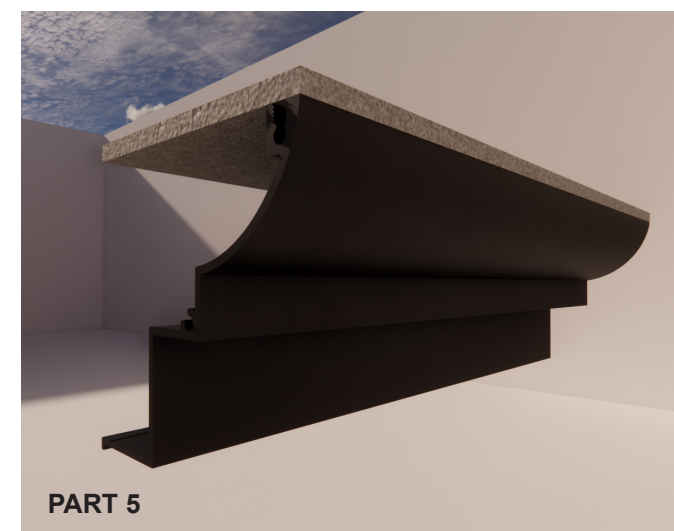
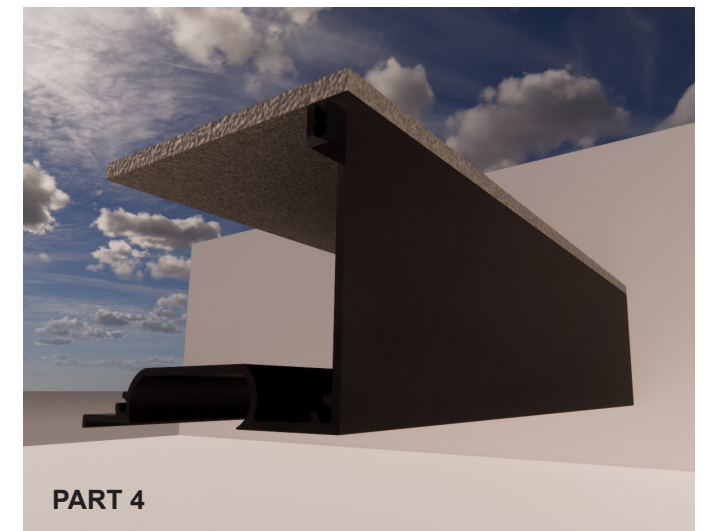
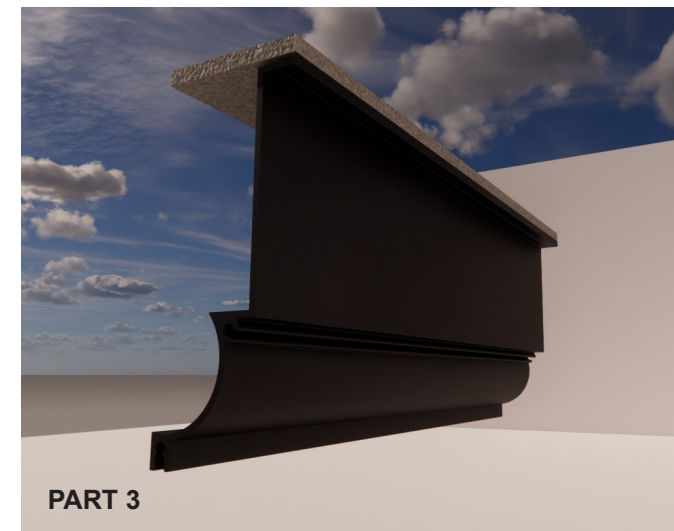
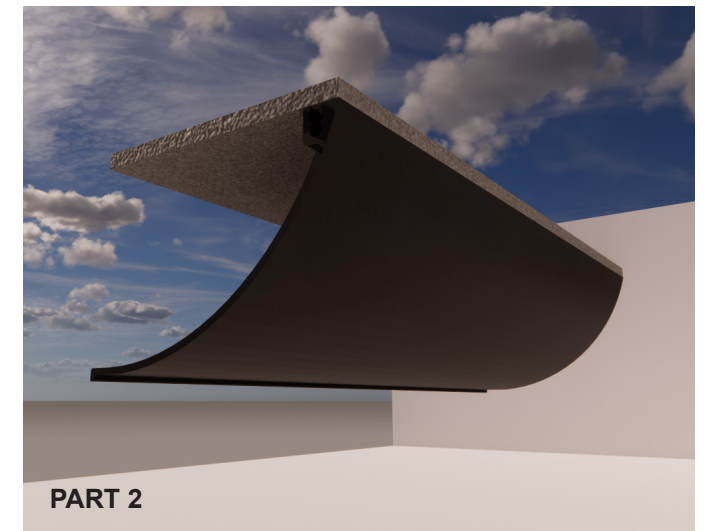
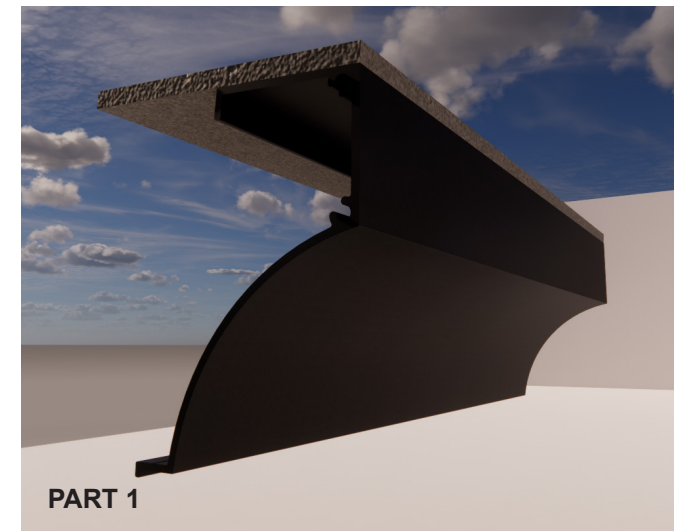
2. Proposal for install  
Details or brief of the install proposal process

3. Install  
Details or brief of the install process. Good time to mention waterproofing how easy and quick install is using the QuooBox™ Systems.



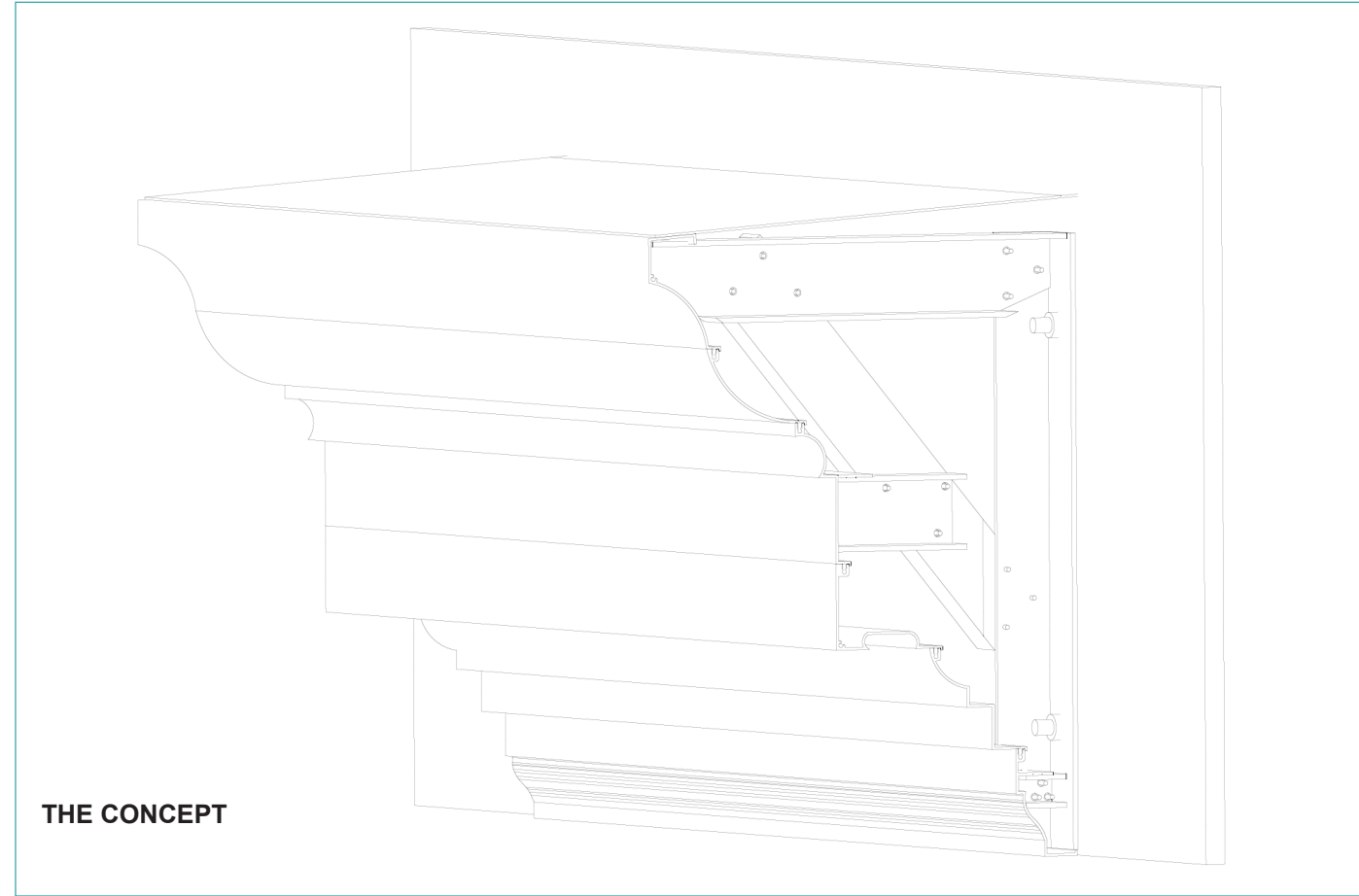
## SIX POSSIBLE PARTS DESIGN

THESE SIX PARTS, WHEN INSTALLED CAN CREATE OVER 100 UNIQUE FINISHED DESIGNS

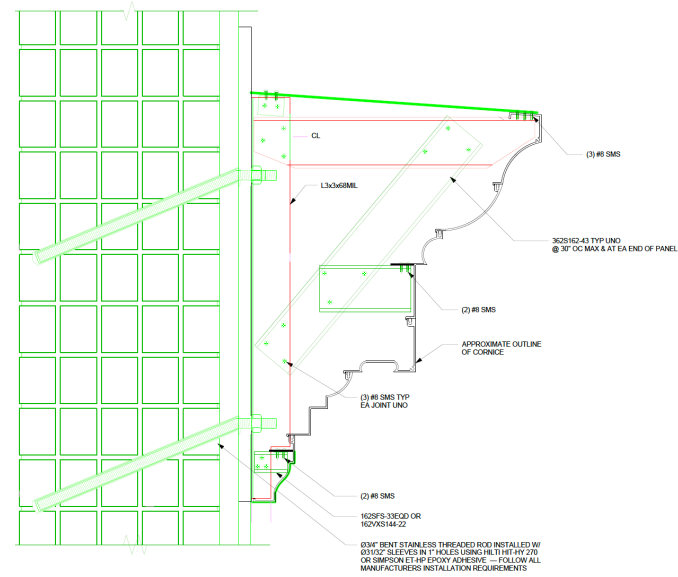


# SAMPLE PROCESS

THE FULL PROCESS ILLUSTRATED BELOW

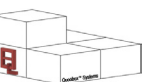
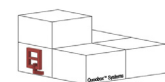
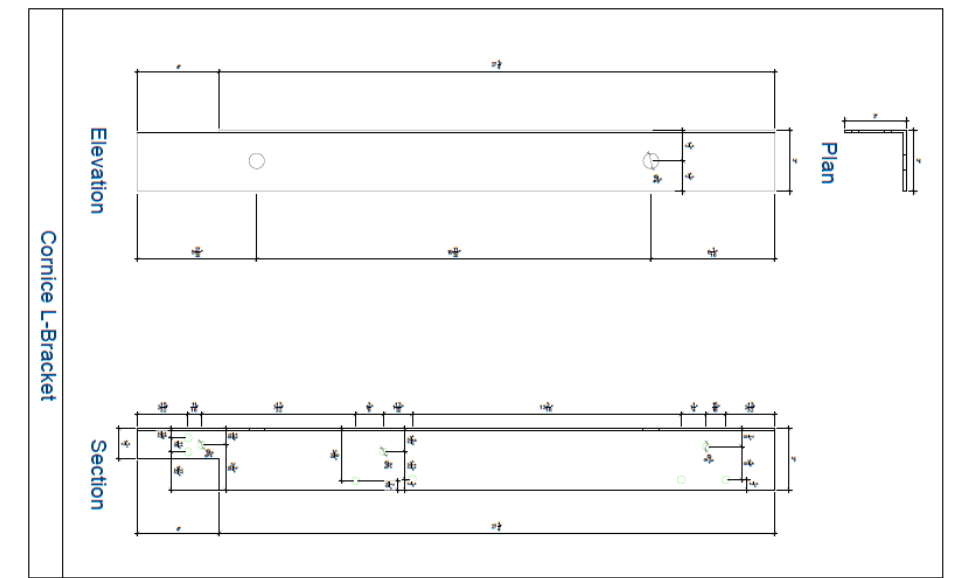
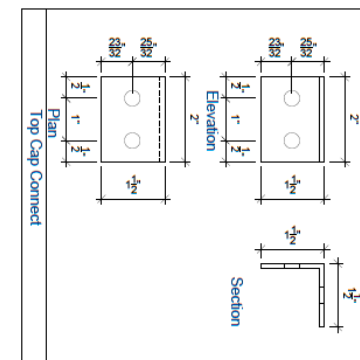
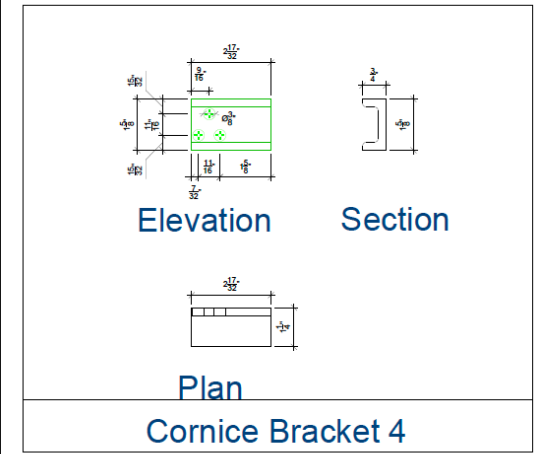
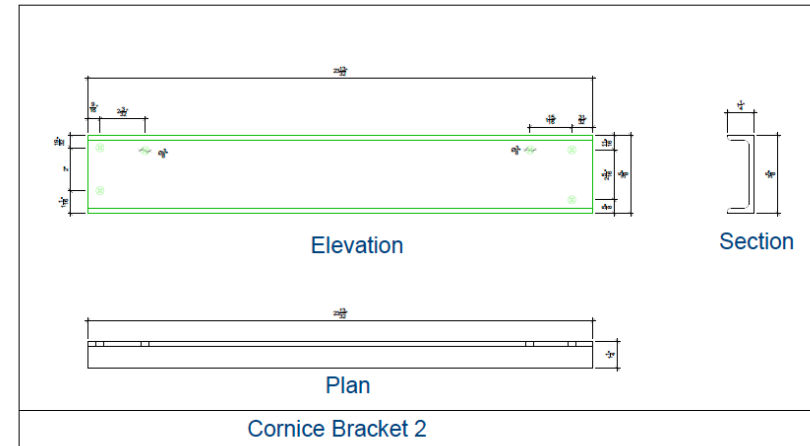
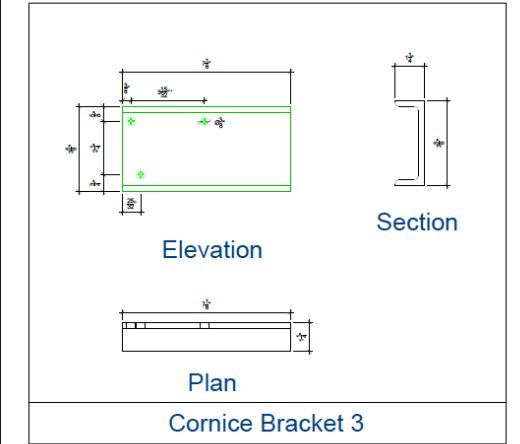
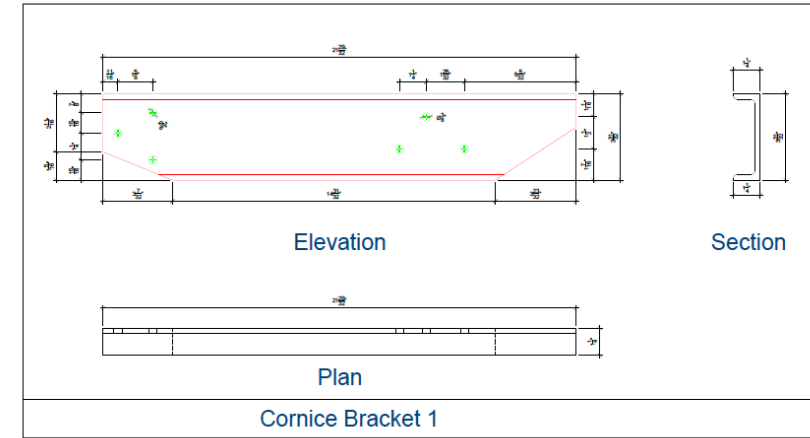


THE CONCEPT

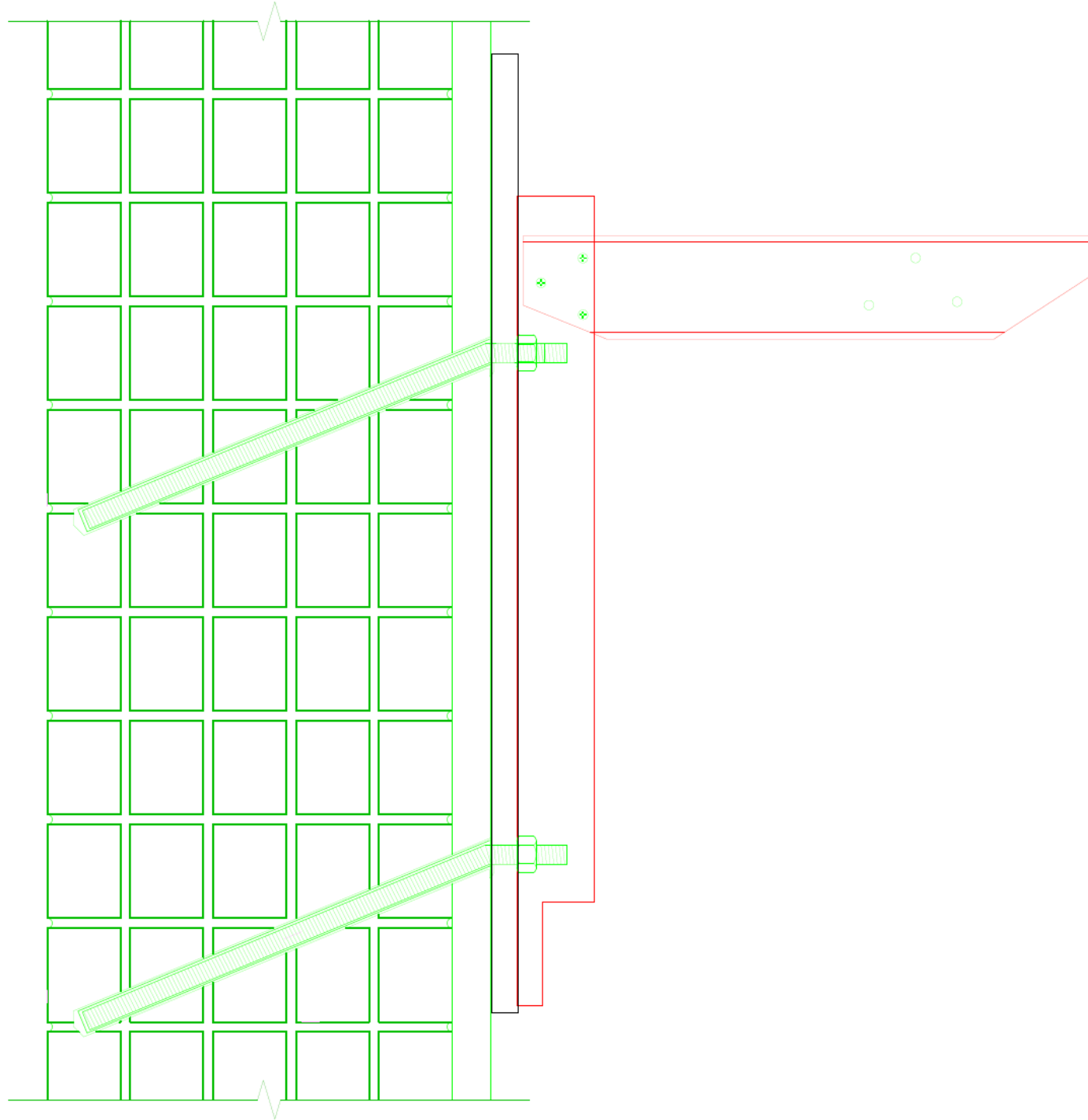


SECTION DETAIL

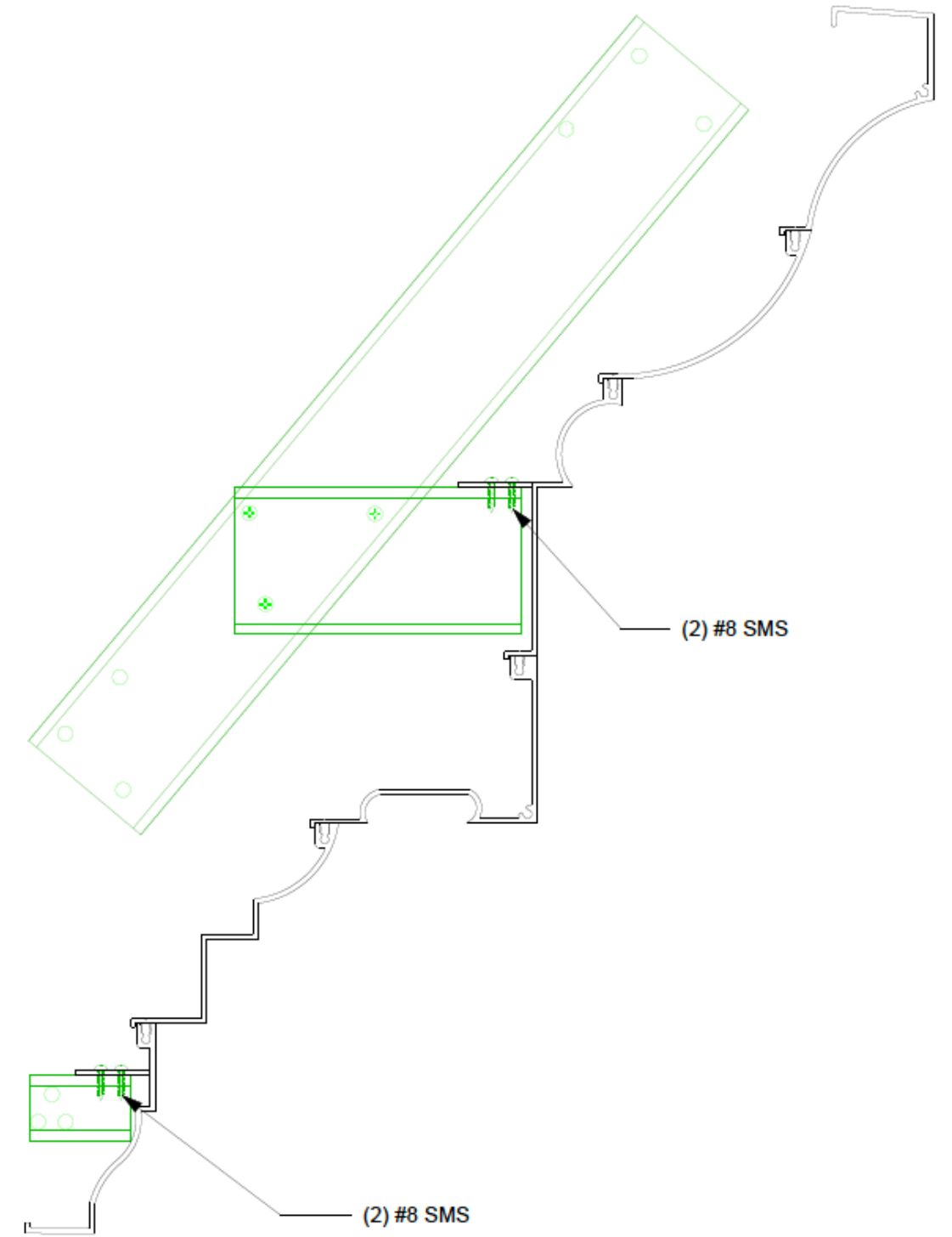
## PARTS OF THE CORNICE



# INSTALLATION STEPS

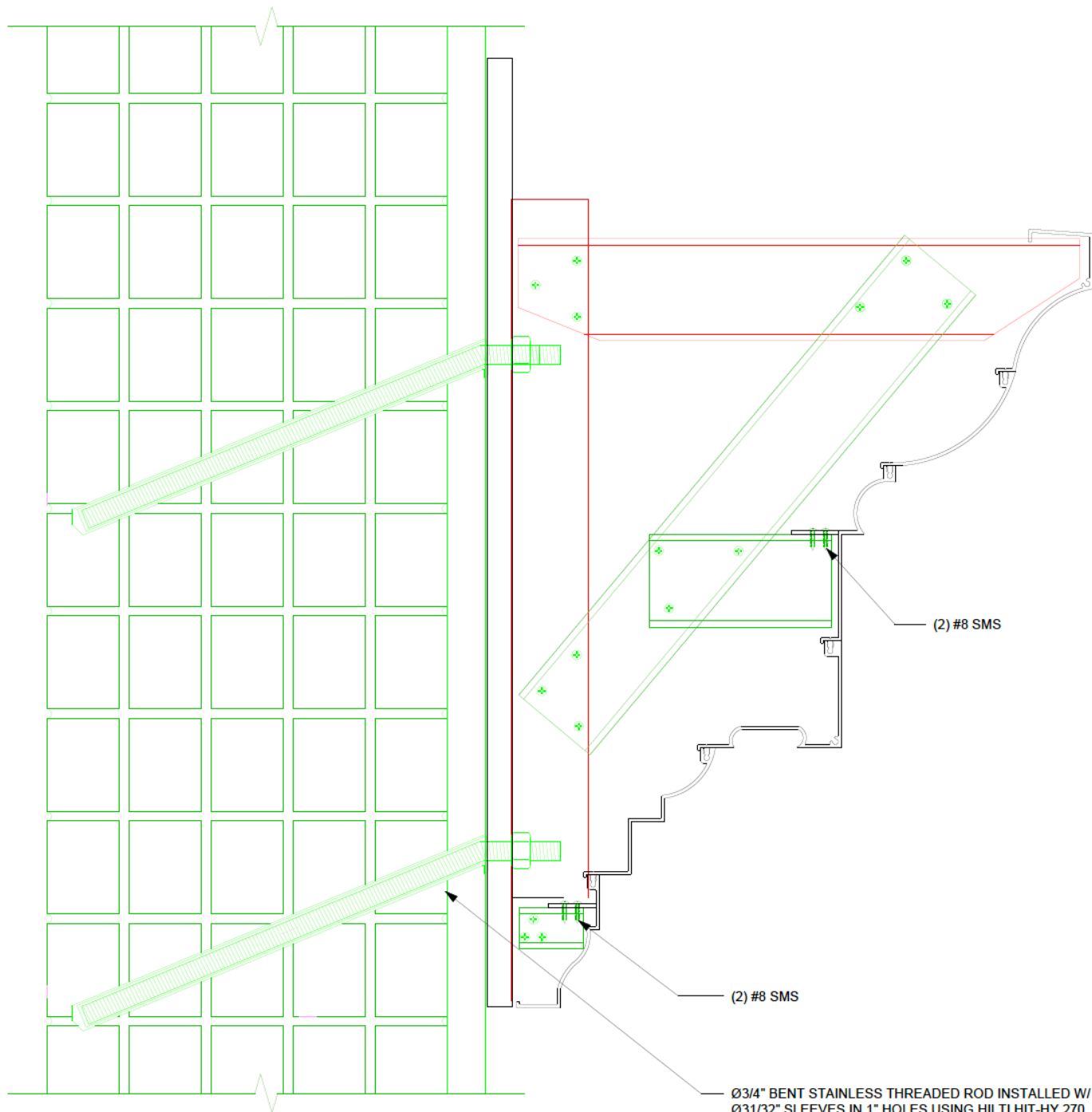


**STEP 1**  
Install Cornice Bracket 1 and L-Bracket to the Building.

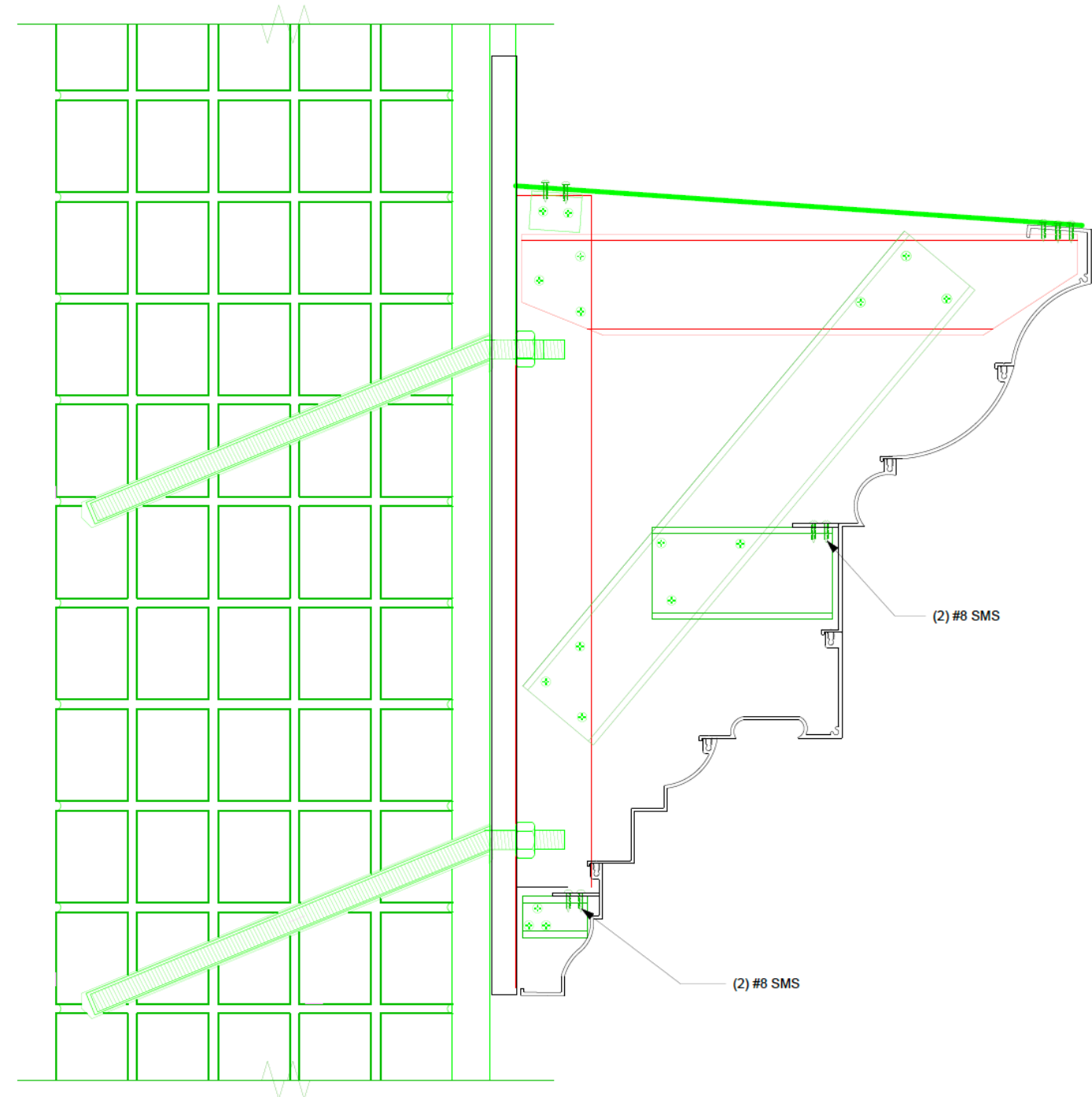


**STEP 2**  
Install Cornice Bracket 2, 3 and 4 to the Cornice.

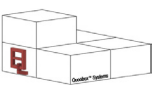
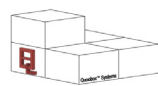




**STEP 3**  
Install Cornice Bracket 2 and 4 to Cornice Bracket 1 and L-Bracket.



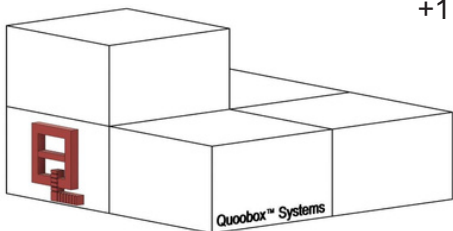
**STEP 4**  
Install Cornice Top Cap to Cornice and the Cornice Bracket Assembly.



OCULUS WorldWide | Quobox™ Systems

10554 Aurora Ave N  
Seattle, WA 98133

+1 206.321.3271



OCULUS  
WorldWide